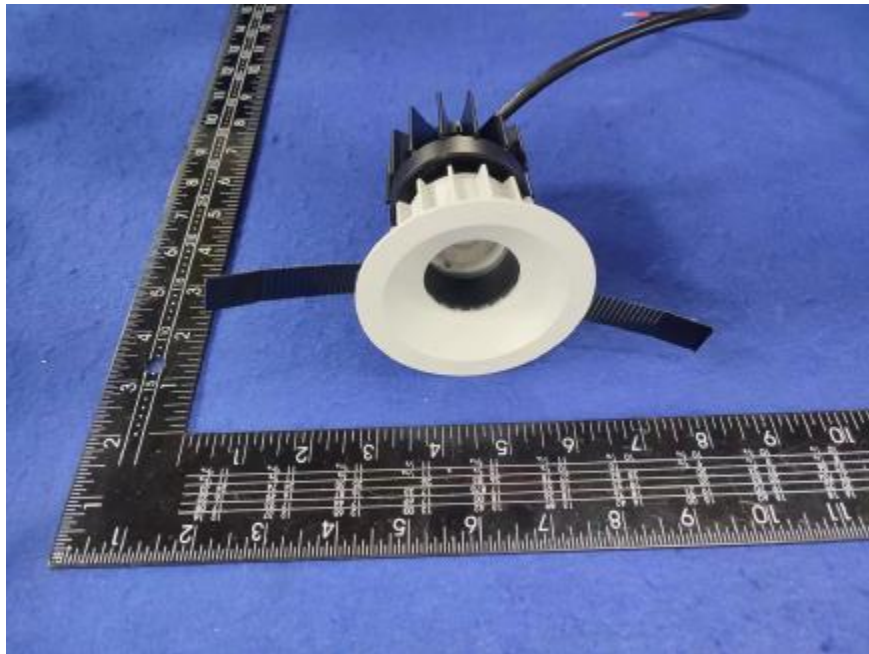


Luminaire Photograph



Light Output Ratio:	66.8%	
Luminaire Power:	10.16 W	
SHR Nominal:	0.50	Calculated using the TM5
SHR Maximum:	0.70	fine grid method.

C Range: 0 - 360DEG
C Interval: 30.0DEG
Test Speed: HIGH
Temperature: 25.3 °C
Operators: zoe
Test Date: 2024-5-21

γ Range: 0 - 180DEG
 γ Interval: 1.0DEG
Test System: EVERFINE GO-SPEX500_V1 SYSTEM V2.00.461
Humidity: 65.0%
Test Distance: 3.160m [K=1.0000]
Remarks: LAMP: BXRE-30G10TH-A-83 Ra: 90
LENS: PM-1082B-WH 36R
NO DRIVER: 300mA
30minutes warm-up

LUMINOUS INTENSITY DISTRIBUTION DIAGRAM

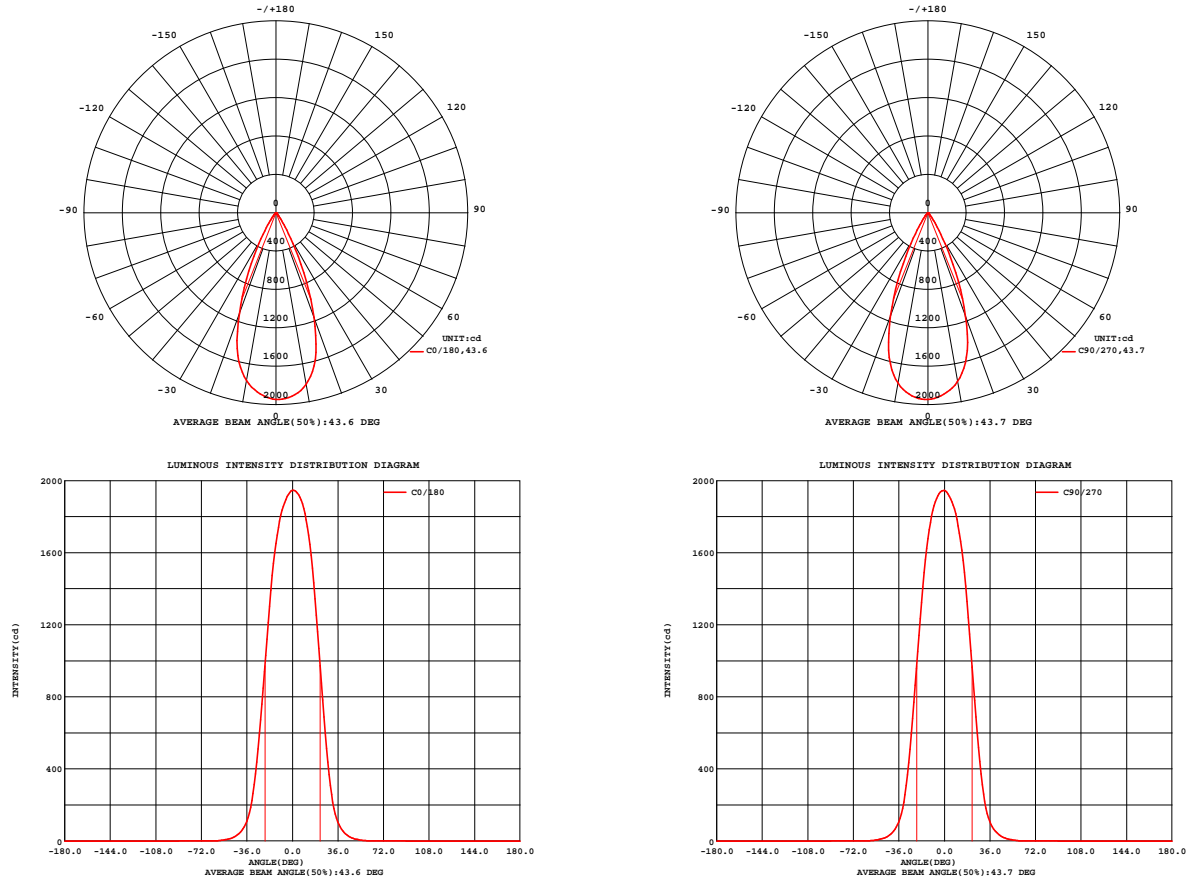


Fig. C0/C180

Fig. C90/C270

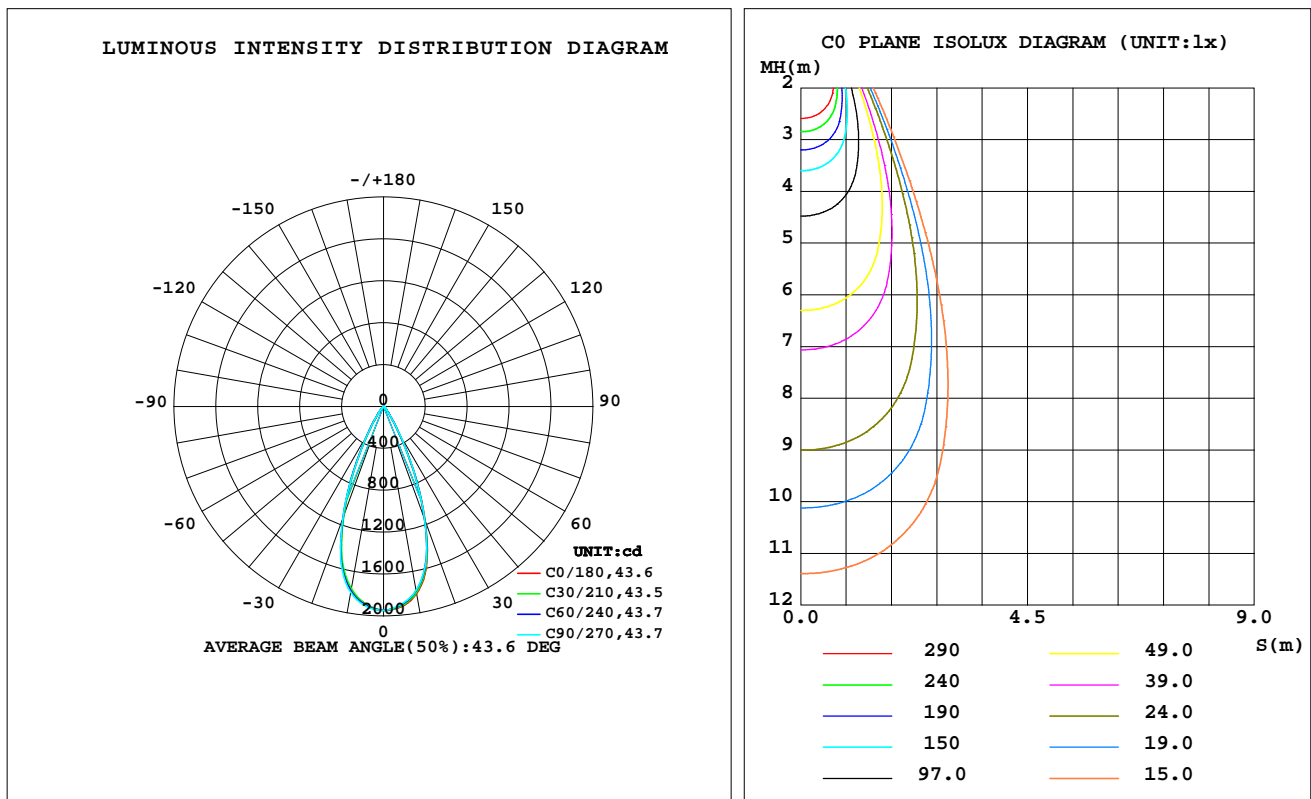
C Range: 0 - 360DEG
C Interval: 30.0DEG
Test Speed: HIGH
Temperature: 25.3 °C
Operators: zoe
Test Date: 2024-5-21

γ Range: 0 - 180DEG
 γ Interval: 1.0DEG
Test System: EVERFINE GO-SPEX500_V1 SYSTEM V2.00.461
Humidity: 65.0%
Test Distance: 3.160m [K=1.0000]
Remarks: LAMP: BXRE-30G10TH-A-83 Ra: 90
LENS: PM-1082B-WH 36R
NO DRIVER: 300mA
30minutes warm-up

LUMINAIRE PHOTOMETRIC TEST REPORT

Test:U:33.867V I:0.3000A P:10.160W PF:1.0000 Freq:0Hz Lamp Flux:1537.95x1 lm		
NAME: 2318.127-ACOT-70-HE	TYPE:	WEIGHT:
SPEC.: 3000K	DIM.:	SERIAL No.: 2405210568
MFR.: RISE	SUR.: 0.00362984m2	Shielding Angle:

DATA OF LAMP		PHOTOMETRIC DATA Eff: 101.13 lm/W			
MODEL	Brideglux	I _{max} (cd)	1946	S/MH(C0/180)	0.67
NOMINAL POWER(W)	10	LOR(%)	66.8	S/MH(C90/270)	0.67
RATED VOLTAGE(V)	34	TOTAL FLUX(lm)	1027.5	η UP,DN(C0-180)	0.0,33.5
NOMINAL FLUX(lm)	1537.95	CIE CLASS	DIRECT	η UP,DN(C180-360)	0.0,33.3
LAMPS INSIDE	1	η up(%)	0.0	CIBSE SHR NOM	0.50
TEST VOLTAGE(V)	34	η down(%)	66.8	CIBSE SHR MAX	0.70



C Range: 0 - 360DEG
C Interval: 30.0DEG
Test Speed: HIGH
Temperature:25.3℃
Operators:zoe
Test Date:2024-5-21

γ Range: 0 - 180DEG
γ Interval: 1.0DEG
Test System:EVERFINE GO-SPEX500_V1 SYSTEM V2.00.461
Humidity:65.0%
Test Distance:3.160m [K=1.0000]
Remarks: LAMP:BXRE-30G10TH-A-83 Ra:90
LENS:PM-1082B-WH 36R
NO DRIVER:300mA
30minutes warm-up

ZONAL FLUX DIAGRAM

ZONAL FLUX DIAGRAM:

γ	C0	C45	C90	C135	C180	C225	C270	C315	γ	Φ zone	Φ total	%lum,lamp
10	1816	1797	1784	1778	1776	1778	1802	1825	0- 10	178.6	178.6	17.4,11.6
20	1161	1152	1149	1138	1120	1125	1142	1161	10- 20	422.8	601.4	58.5,39.1
30	308.7	309.2	312.2	316.4	313.8	308.1	307.7	305.7	20- 30	310.4	911.7	88.7,59.3
40	56.07	56.99	57.85	58.56	57.78	56.67	55.62	54.48	30- 40	88.93	1001	97.4,65.1
50	10.54	11.58	11.98	11.90	11.77	10.82	11.03	10.70	40- 50	21.27	1022	99.5,66.4
60	1.379	1.420	1.447	1.465	1.419	1.389	1.361	1.336	50- 60	4.513	1026	99.9,66.7
70	0.4019	0.4042	0.4156	0.4270	0.4228	0.4079	0.4001	0.3826	60- 70	0.8352	1027	100,66.8
80	0.0596	0.0484	0.0518	0.0495	0.0552	0.0504	0.0596	0.0459	70- 80	0.1705	1027	100,66.8
90	0	0	0	0	0	0	0	0	80- 90	0.0277	1027	100,66.8
100	0	0	0	0	0	0	0	0	90-100	0	1027	100,66.8
110	0	0	0	0	0	0	0	0	100-110	0	1027	100,66.8
120	0	0	0	0	0	0	0	0	110-120	0	1027	100,66.8
130	0	0	0	0	0	0	0	0	120-130	0	1027	100,66.8
140	0	0	0	0	0	0	0	0	130-140	0	1027	100,66.8
150	0	0	0	0	0	0	0	0	140-150	0	1027	100,66.8
160	0	0	0	0	0	0	0	0	150-160	0	1027	100,66.8
170	0	0	0	0	0	0	0	0	160-170	0	1027	100,66.8
180	0	0	0	0	0	0	0	0	170-180	0	1027	100,66.8
DEG	LUMINOUS INTENSITY:cd									UNIT:lm		

C Range: 0 - 360DEG
C Interval: 30.0DEG
Test Speed: HIGH
Temperature:25.3℃
Operators:zoe
Test Date:2024-5-21

γ Range: 0 - 180DEG
 γ Interval: 1.0DEG
Test System:EVERFINE GO-SPEX500_V1 SYSTEM V2.00.461
Humidity:65.0%
Test Distance:3.160m [K=1.0000]
Remarks: LAMP:BXRE-30G10TH-A-83 Ra:90
LENS:PM-1082B-WH 36R
NO DRIVER:300mA
30minutes warm-up

LUMINANCE LIMITATION CURVES

Test:U:33.867V I:0.3000A P:10.160W PF:1.0000 Freq:0Hz
Lamp Flux:1537.95x1 lm

NAME: 2318.127-ACOT-70-HE

TYPE:

WEIGHT:

SPEC.: 3000K

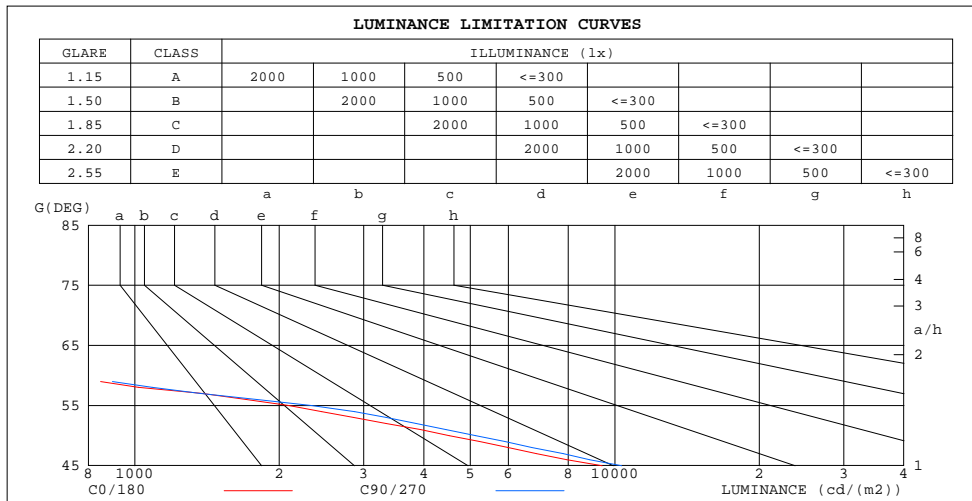
DIM.:

SERIAL No.: 2405210568

MFR.: RISE

SUR.: 0.00362984m2

Shielding Angle:



LUMINANCE cd/(m2)		
G(180)	C0/180	C90/270
85	86	88
80	95	82
75	131	125
70	324	335
65	528	555
60	760	798
55	2098	2340
50	4518	5135
45	9404	10331

C Range: 0 - 360DEG
C Interval: 30.0DEG
Test Speed: HIGH
Temperature:25.3℃
Operators:zoe
Test Date:2024-5-21

γ Range: 0 - 180DEG
γ Interval: 1.0DEG
Test System:EVERFINE GO-SPEX500_V1 SYSTEM V2.00.461
Humidity:65.0%
Test Distance:3.160m [K=1.0000]
Remarks: LAMP:BXRE-30G10TH-A-83 Ra:90
LENS:PM-1082B-WH 36R
NO DRIVER:300mA
30minutes warm-up

CU AND LUMINAIRE BUDGETARY ESTIMATE DIAGRAM

Test:U:33.867V I:0.3000A P:10.160W PF:1.0000 Freq:0Hz
Lamp Flux:1537.95x1 lm

NAME: 2318.127-ACOT-70-HE

TYPE:

WEIGHT:

SPEC.: 3000K

DIM.:

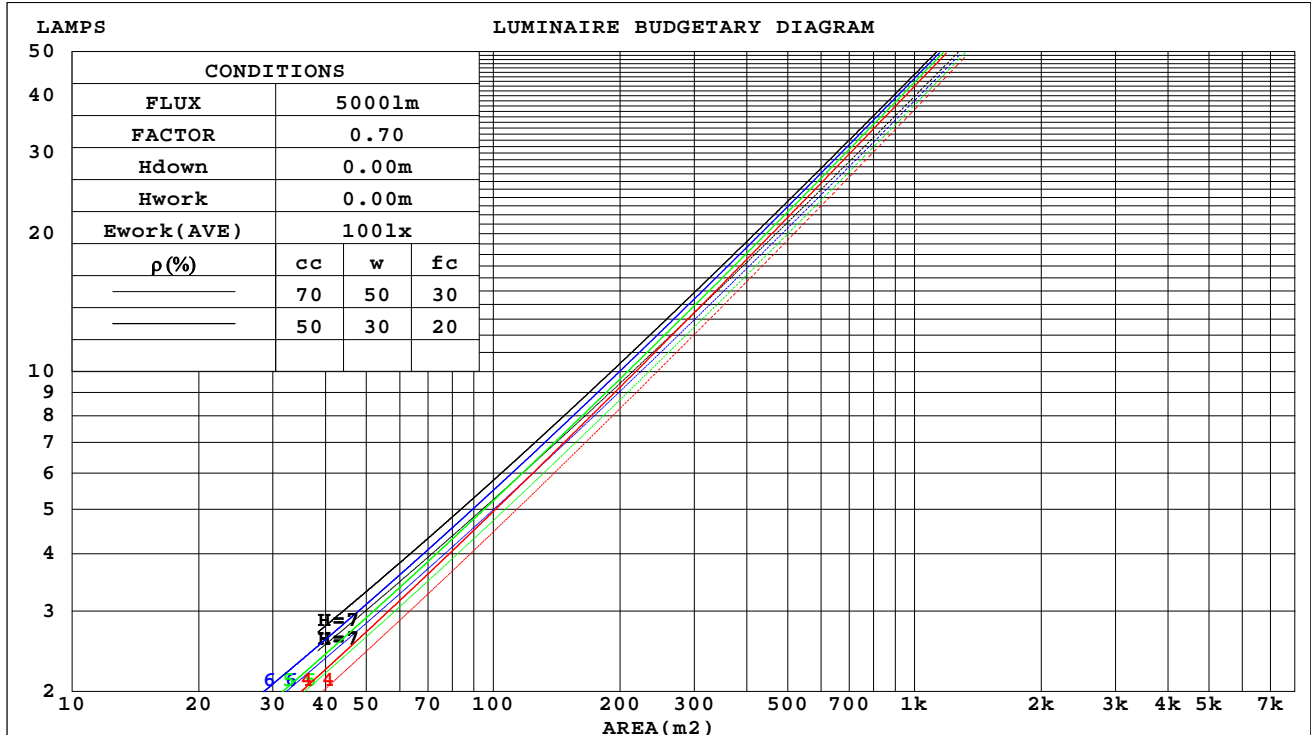
SERIAL No.: 2405210568

MFR.: RISE

SUR.: 0.00362984m2

Shielding Angle:

pcc	80%			70%			50%			30%			10%			0
pw	50%	30%	10%	50%	30%	10%	50%	30%	10%	50%	30%	10%	50%	30%	10%	0
pfc	20%			20%			20%			20%			20%			0
RCR	RCR:Room Cavity Ratio															



C Range: 0 - 360DEG
C Interval: 30.0DEG
Test Speed: HIGH
Temperature:25.3℃
Operators:zoe
Test Date:2024-5-21

γ Range: 0 - 180DEG
γ Interval: 1.0DEG
Test System:EVERFINE GO-SPEX500_V1 SYSTEM V2.00.461
Humidity:65.0%
Test Distance:3.160m [K=1.0000]
Remarks: LAMP:BXRE-30G10TH-A-83 Ra:90
LENS:PM-1082B-WH 36R
NO DRIVER:300mA
30minutes warm-up

WEC AND CCEC

Test:U:33.867V I:0.3000A P:10.160W PF:1.0000 Freq:0Hz Lamp Flux:1537.95x1 lm		
NAME: 2318.127-ACOT-70-HE	TYPE:	WEIGHT:
SPEC.: 3000K	DIM.:	SERIAL No.: 2405210568
MFR.: RISE	SUR.: 0.00362984m2	Shielding Angle:

pcc	80%			70%			50%			30%			10%			0
pw	50%	30%	10%	50%	30%	10%	50%	30%	10%	50%	30%	10%	50%	30%	10%	0
pfc	20%			20%			20%			20%			20%			0
RCR	RCR:Room Cavity Ratio						Wall Exitance Coefficients(WEC)									
0.0																
1.0	.105	.060	.019	.100	.057	.018	.092	.053	.017	.084	.049	.016	.077	.045	.014	
2.0	.099	.054	.017	.095	.052	.016	.088	.049	.015	.082	.046	.014	.076	.043	.014	
3.0	.093	.050	.015	.090	.048	.015	.084	.046	.014	.079	.043	.013	.074	.041	.013	
4.0	.089	.046	.014	.086	.045	.013	.081	.043	.013	.076	.041	.012	.072	.039	.012	
5.0	.084	.043	.012	.082	.042	.012	.078	.040	.012	.074	.039	.012	.070	.037	.011	
6.0	.080	.040	.012	.078	.040	.011	.075	.038	.011	.071	.037	.011	.068	.036	.011	
7.0	.077	.038	.011	.075	.037	.011	.072	.036	.010	.069	.035	.010	.066	.034	.010	
8.0	.074	.036	.010	.072	.035	.010	.069	.035	.010	.066	.034	.010	.064	.033	.010	
9.0	.071	.034	.010	.069	.034	.009	.067	.033	.009	.064	.032	.009	.062	.031	.009	
10.0	.068	.033	.009	.067	.032	.009	.064	.031	.009	.062	.031	.009	.060	.030	.009	

pcc	80%			70%			50%			30%			10%			0	
pw	50%	30%	10%	50%	30%	10%	50%	30%	10%	50%	30%	10%	50%	30%	10%	0	
pfc	20%			20%			20%			20%			20%			0	
RCR	RCR:Room Cavity Ratio						Ceiling Cavity Exitance Coefficients(CCEC)										
0.0	.127	.127	.127	.109	.109	.109	.074	.074	.074	.043	.043	.043	.014	.014	.014		
1.0	.113	.105	.098	.097	.090	.084	.066	.062	.058	.038	.036	.034	.012	.012	.011		
2.0	.102	.089	.077	.088	.076	.067	.060	.053	.046	.035	.031	.027	.011	.010	.009		
3.0	.093	.076	.062	.080	.065	.054	.055	.045	.038	.032	.027	.022	.010	.009	.007		
4.0	.086	.066	.051	.073	.057	.044	.051	.040	.031	.029	.023	.018	.009	.008	.006		
5.0	.079	.058	.042	.068	.050	.036	.047	.035	.026	.027	.020	.015	.009	.007	.005		
6.0	.074	.051	.035	.064	.044	.031	.044	.031	.022	.025	.018	.013	.008	.006	.004		
7.0	.069	.046	.030	.060	.040	.026	.041	.028	.018	.024	.017	.011	.008	.005	.004		
8.0	.065	.042	.026	.056	.036	.022	.039	.025	.016	.023	.015	.009	.007	.005	.003		
9.0	.062	.038	.022	.053	.033	.019	.037	.023	.014	.022	.014	.008	.007	.005	.003		
10.0	.059	.035	.019	.051	.031	.017	.035	.021	.012	.020	.013	.007	.007	.004	.002		

C Range: 0 - 360DEG
C Interval: 30.0DEG
Test Speed: HIGH
Temperature:25.3℃
Operators:zoe
Test Date:2024-5-21

γ Range: 0 - 180DEG
γ Interval: 1.0DEG
Test System:EVERFINE GO-SPEX500_V1 SYSTEM V2.00.461
Humidity:65.0%
Test Distance:3.160m [K=1.0000]
Remarks: LAMP:BXRE-30G10TH-A-83 Ra:90
LENS:PM-1082B-WH 36R
NO DRIVER:300mA
30minutes warm-up

UGR(Unified Glare Rating) Table

Test:U:33.867V I:0.3000A P:10.160W PF:1.0000 Freq:0Hz Lamp Flux:1537.95x1 lm										
NAME: 2318.127-ACOT-70-HE					TYPE:			WEIGHT:		
SPEC.: 3000K					DIM.:			SERIAL No.: 2405210568		
MFR.: RISE					SUR.: 0.00362984m2			Shielding Angle:		
ceiling/cavity	0.7	0.7	0.5	0.5	0.3	0.7	0.7	0.5	0.5	0.3
walls	0.5	0.3	0.5	0.3	0.3	0.5	0.3	0.5	0.3	0.3
working plane	0.2	0.2	0.2	0.2	0.2	0.2	0.2	0.2	0.2	0.2
Room dimensions	Viewed crosswise					Viewed endwise				
x = 2H y = 2H	12.2	13.0	12.4	13.2	13.3	12.3	13.1	12.5	13.3	13.4
3H	12.1	12.8	12.3	13.0	13.2	12.2	12.9	12.4	13.1	13.3
4H	12.0	12.7	12.2	12.9	13.1	12.1	12.8	12.3	13.0	13.2
6H	11.9	12.5	12.2	12.8	13.0	12.0	12.6	12.3	12.9	13.1
8H	11.8	12.5	12.1	12.7	13.0	11.9	12.6	12.2	12.8	13.1
12H	11.8	12.4	12.1	12.7	12.9	11.9	12.5	12.2	12.8	13.0
4H 2H	12.0	12.7	12.2	12.9	13.1	12.1	12.8	12.3	13.0	13.2
3H	11.8	12.4	12.1	12.7	12.9	11.9	12.5	12.2	12.8	13.0
4H	11.7	12.3	12.1	12.6	12.9	11.8	12.4	12.1	12.7	13.0
6H	11.6	12.1	12.0	12.4	12.8	11.7	12.2	12.1	12.5	12.9
8H	11.6	12.0	12.0	12.4	12.7	11.7	12.1	12.0	12.5	12.8
12H	11.5	11.9	11.9	12.3	12.7	11.6	12.0	12.0	12.4	12.8
8H 4H	11.6	12.0	12.0	12.4	12.7	11.7	12.1	12.0	12.5	12.8
6H	11.5	11.8	11.9	12.2	12.6	11.5	11.9	12.0	12.3	12.7
8H	11.4	11.7	11.8	12.1	12.6	11.5	11.8	11.9	12.2	12.7
12H	11.3	11.6	11.8	12.1	12.5	11.4	11.7	11.9	12.2	12.6
12H 4H	11.5	11.9	11.9	12.3	12.7	11.6	12.0	12.0	12.4	12.8
6H	11.4	11.7	11.8	12.1	12.6	11.5	11.8	11.9	12.2	12.7
8H	11.3	11.6	11.8	12.1	12.5	11.4	11.7	11.9	12.2	12.6
Variations with the observer position at spacings(CIE Pub.117):										
S = 1.0H	+ 3.5 / -13.4					+ 3.4 / -13.4				
1.5H	+ 5.5 / - 9.5					+ 5.4 / - 9.7				
2.0H	+ 6.3 / -10.2					+ 6.4 / -10.6				

CIE Pub.117, 1538 lm Total Lamp Luminous Flux Correct (8log(F/F0) = 1.5)
Area: 0.00362984 m2

C Range: 0 - 360DEG
C Interval: 30.0DEG
Test Speed: HIGH
Temperature:25.3℃
Operators:zoe
Test Date:2024-5-21

γ Range: 0 - 180DEG
γ Interval: 1.0DEG
Test System:EVERFINE GO-SPEX500_V1 SYSTEM V2.00.461
Humidity:65.0%
Test Distance:3.160m [K=1.0000]
Remarks: LAMP:BXRE-30G10TH-A-83 Ra:90
LENS:PM-1082B-WH 36R
NO DRIVER:300mA
30minutes warm-up

UTILIZATION FACTORS TABLE

Test:U:33.867V I:0.3000A P:10.160W PF:1.0000 Freq:0Hz Lamp Flux:1537.95x1 lm		
NAME: 2318.127-ACOT-70-HE	TYPE:	WEIGHT:
SPEC.: 3000K	DIM.:	SERIAL No.: 2405210568
MFR.: RISE	SUR.: 0.00362984m2	Shielding Angle:

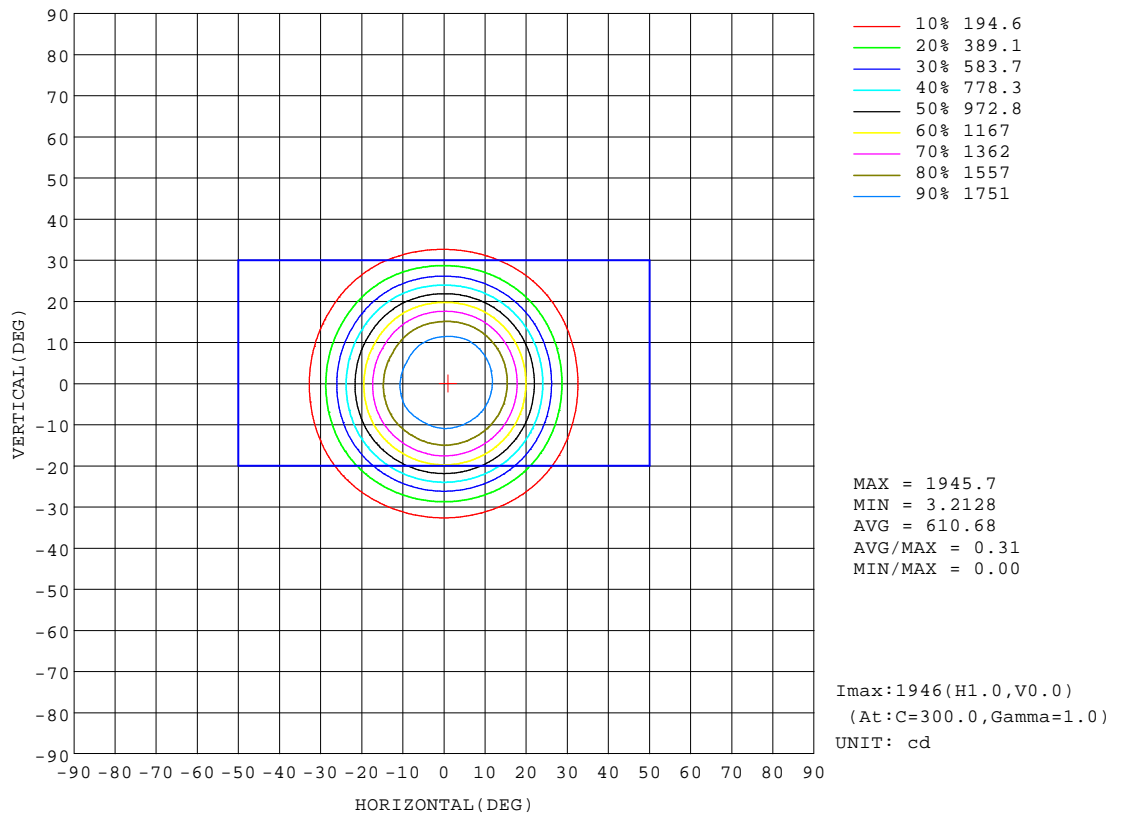
REFLECTANCE										
Ceiling	0.8	0.8	0.8	0.7	0.7	0.7	0.5	0.5	0.5	0
Walls	0.7	0.5	0.3	0.7	0.5	0.3	0.7	0.5	0.3	0
Working plane	0.2	0.2	0.2	0.2	0.2	0.2	0.2	0.2	0.2	0
ROOM INDEX	UTILIZATION FACTORS(PERCENT) $k(RI) \times RCR = 5$									
k = 0.60	60	56	54	60	56	54	59	56	54	51
0.80	65	61	59	64	61	59	64	61	59	56
1.00	68	64	62	67	64	62	66	64	61	59
1.25	70	67	65	69	66	64	68	66	64	61
1.50	72	69	67	71	68	66	69	67	66	63
2.00	73	71	69	72	70	68	70	69	67	64
2.50	74	72	70	73	71	69	71	69	68	64
3.00	75	73	71	74	72	71	72	70	69	65
4.00	76	75	73	75	74	72	73	72	71	66
5.00	77	76	75	76	75	74	73	72	72	67
ROOM INDEX	UF(total)									Direct
According to DIN EN 13032-2 2004			Suspended					SHRNOM = 1.25		

C Range: 0 - 360DEG
C Interval: 30.0DEG
Test Speed: HIGH
Temperature:25.3℃
Operators:zoe
Test Date:2024-5-21

γ Range: 0 - 180DEG
γ Interval: 1.0DEG
Test System:EVERFINE GO-SPEX500_V1 SYSTEM V2.00.461
Humidity:65.0%
Test Distance:3.160m [K=1.0000]
Remarks: LAMP:BXRE-30G10TH-A-83 Ra:90
LENS:PM-1082B-WH 36R
NO DRIVER:300mA
30minutes warm-up

ISOCANDELA DIAGRAM

Test:U:33.867V I:0.3000A P:10.160W PF:1.0000 Freq:0Hz Lamp Flux:1537.95x1 lm		
NAME: 2318.127-ACOT-70-HE	TYPE:	WEIGHT:
SPEC.: 3000K	DIM.:	SERIAL No.: 2405210568
MFR.: RISE	SUR.: 0.00362984m2	Shielding Angle:

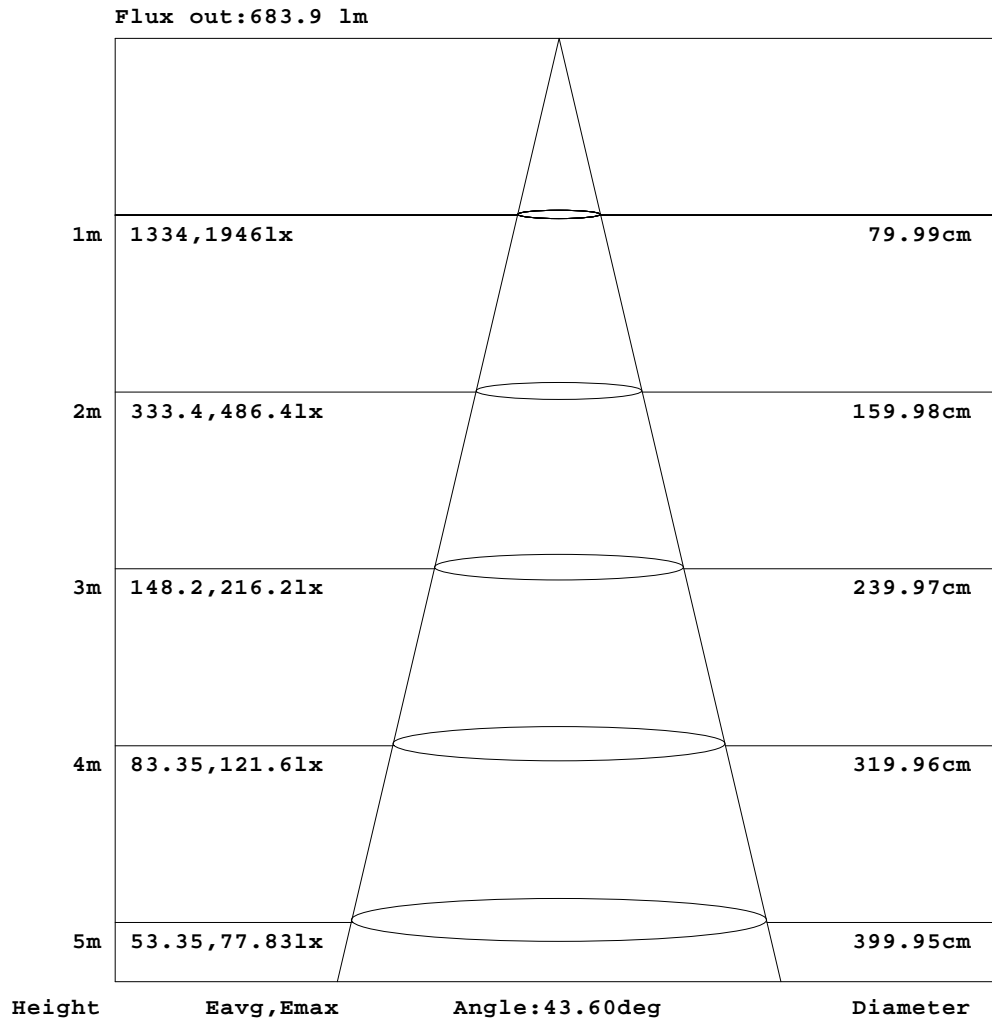


C Range: 0 - 360DEG
C Interval: 30.0DEG
Test Speed: HIGH
Temperature:25.3℃
Operators:zoe
Test Date:2024-5-21

γ Range: 0 - 180DEG
γ Interval: 1.0DEG
Test System:EVERFINE GO-SPEX500_V1 SYSTEM V2.00.461
Humidity:65.0%
Test Distance:3.160m [K=1.0000]
Remarks: LAMP:BXRE-30G10TH-A-83 Ra:90
LENS:PM-1082B-WH 36R
NO DRIVER:300mA
30minutes warm-up

AAI Figure

Test:U:33.867V I:0.3000A P:10.160W PF:1.0000 Freq:0Hz Lamp Flux:1537.95x1 lm		
NAME: 2318.127-ACOT-70-HE	TYPE:	WEIGHT:
SPEC.: 3000K	DIM.:	SERIAL No.: 2405210568
MFR.: RISE	SUR.: 0.00362984m2	Shielding Angle:



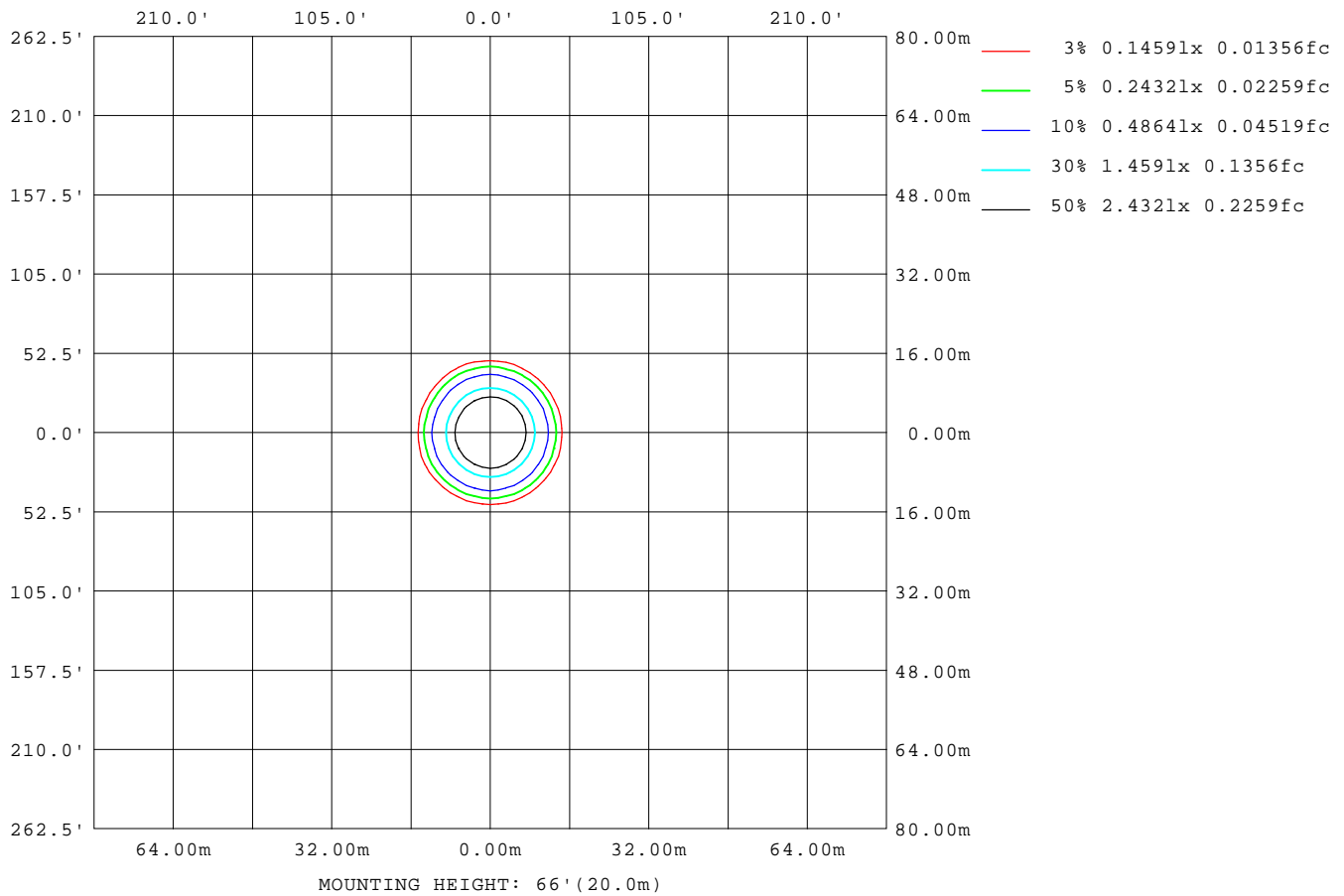
Note:The Curves indicate the illuminated area and the average illumination when the luminaire is at different distance.

C Range: 0 - 360DEG
C Interval: 30.0DEG
Test Speed: HIGH
Temperature:25.3℃
Operators:zoe
Test Date:2024-5-21

γ Range: 0 - 180DEG
γ Interval: 1.0DEG
Test System:EVERFINE GO-SPEX500_V1 SYSTEM V2.00.461
Humidity:65.0%
Test Distance:3.160m [K=1.0000]
Remarks: LAMP:BXRE-30G10TH-A-83 Ra:90
LENS:PM-1082B-WH 36R
NO DRIVER:300mA
30minutes warm-up

ISOLUX DIAGRAM

Test:U:33.867V I:0.3000A P:10.160W PF:1.0000 Freq:0Hz Lamp Flux:1537.95x1 lm		
NAME: 2318.127-ACOT-70-HE	TYPE:	WEIGHT:
SPEC.: 3000K	DIM.:	SERIAL No.: 2405210568
MFR.: RISE	SUR.: 0.00362984m2	Shielding Angle:



C Range: 0 - 360DEG
C Interval: 30.0DEG
Test Speed: HIGH
Temperature: 25.3 °C
Operators: zoe
Test Date: 2024-5-21

γ Range: 0 - 180DEG
γ Interval: 1.0DEG
Test System: EVERFINE GO-SPEX500_V1 SYSTEM V2.00.461
Humidity: 65.0%
Test Distance: 3.160m [K=1.0000]
Remarks: LAMP: BXRE-30G10TH-A-83 Ra: 90
LENS: PM-1082B-WH 36R
NO DRIVER: 300mA
30minutes warm-up

LED Avg.L Report

Test:U:33.867V I:0.3000A P:10.160W PF:1.0000 Freq:0Hz Lamp Flux:1537.95x1 lm		
NAME: 2318.127-ACOT-70-HE	TYPE:	WEIGHT:
SPEC.: 3000K	DIM.:	SERIAL No.: 2405210568
MFR.: RISE	SUR.: 0.00362984m2	Shielding Angle:

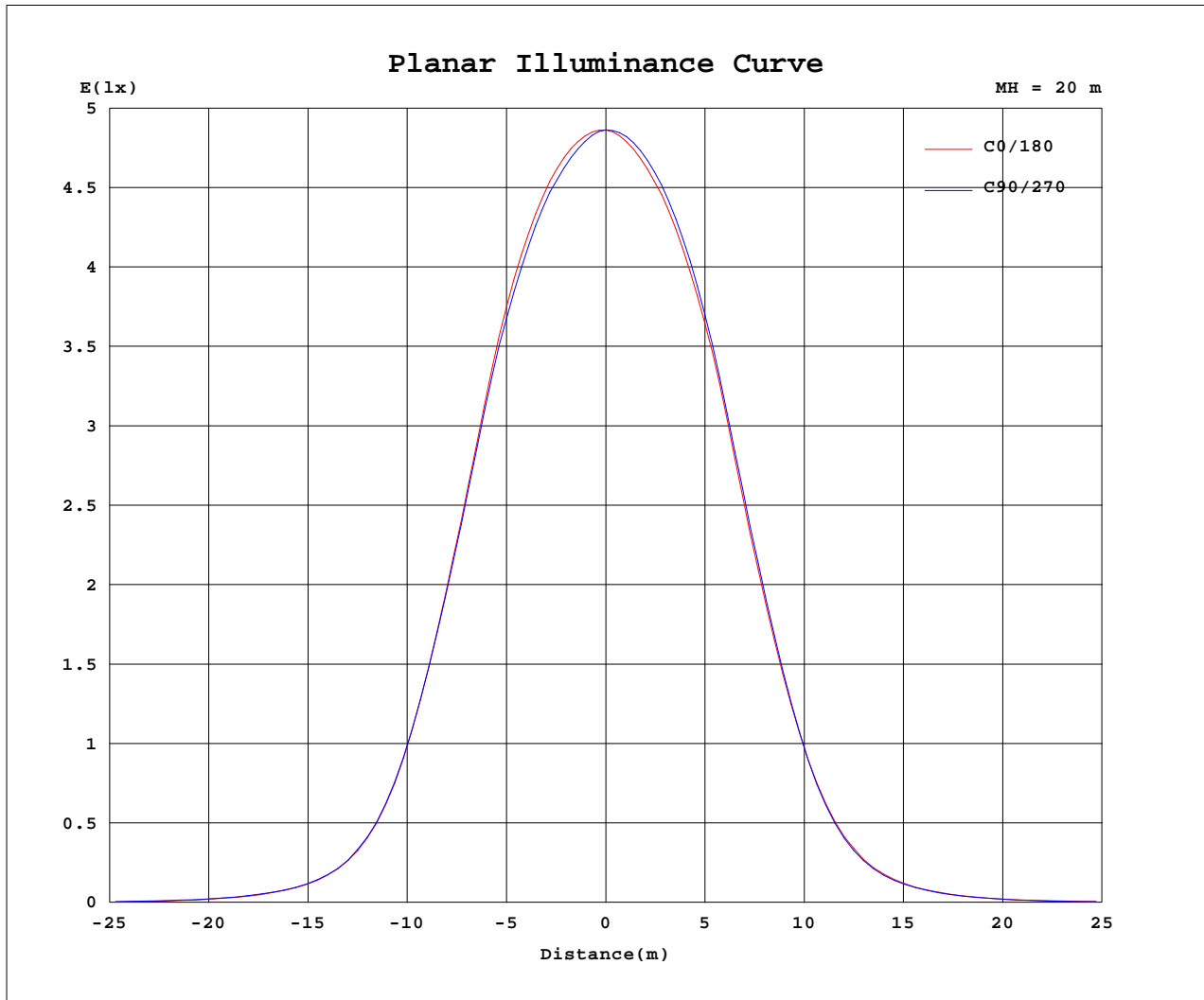
AvgL	cd/m2
L_0~180(65)av	537
L_0~180(75)av	134
L_0~180(85)av	94
L_90~270(65)av	536
L_90~270(75)av	131
L_90~270(85)av	92
L_45(65)av	536
L_45(75)av	127
L_45(85)av	65

Standard: GB/T 29293-2012

C Range: 0 - 360DEG
C Interval: 30.0DEG
Test Speed: HIGH
Temperature:25.3℃
Operators:zoe
Test Date:2024-5-21

γ Range: 0 - 180DEG
γ Interval: 1.0DEG
Test System:EVERFINE GO-SPEX500_V1 SYSTEM V2.00.461
Humidity:65.0%
Test Distance:3.160m [K=1.0000]
Remarks: LAMP:BXRE-30G10TH-A-83 Ra:90
LENS:PM-1082B-WH 36R
NO DRIVER:300mA
30minutes warm-up

Planar Illuminance Curve



C Range: 0 - 360DEG
 C Interval: 30.0DEG
 Test Speed: HIGH
 Temperature: 25.3 °C
 Operators: zoe
 Test Date: 2024-5-21

γ Range: 0 - 180DEG
 γ Interval: 1.0DEG
 Test System: EVERFINE GO-SPEX500_V1 SYSTEM V2.00.461
 Humidity: 65.0%
 Test Distance: 3.160m [K=1.0000]
 Remarks: LAMP: BXRE-30G10TH-A-83 Ra: 90
 LENS: PM-1082B-WH 36R
 NO DRIVER: 300mA
 30minutes warm-up



LUMINOUS DISTRIBUTION INTENSITY DATA

Test:U:33.867V I:0.3000A P:10.160W PF:1.0000 Freq:0Hz Lamp Flux:1537.95x1 lm		
NAME: 2318.127-ACOT-70-HE	TYPE:	WEIGHT:
SPEC.: 3000K	DIM.:	SERIAL No.: 2405210568
MFR.: RISE	SUR.: 0.00362984m2	Shielding Angle:

Table--1

UNIT: cd

C(DEG) γ (DEG)	0	30	60	90	120	150	180	210	240	270	300	330						
0	1946	1946	1946	1946	1946	1946	1946	1946	1946	1946	1946	1946						
5	1920	1913	1903	1897	1894	1896	1895	1896	1906	1915	1923	1923						
10	1816	1806	1788	1784	1772	1783	1776	1766	1790	1802	1825	1825						
15	1584	1573	1557	1558	1545	1554	1540	1526	1553	1561	1588	1593						
20	1161	1155	1148	1149	1137	1140	1120	1111	1139	1142	1159	1162						
25	688	688	687	688	683	686	672	660	683	679	683	684						
30	309	309	310	312	312	321	314	302	314	308	305	306						
35	126	127	128	128	127	133	131	126	131	126	124	125						
40	56.1	56.2	57.8	57.8	57.3	59.8	57.8	56.0	57.3	55.6	54.3	54.7						
45	24.1	25.0	26.0	26.5	25.7	26.8	25.6	24.1	24.4	24.0	23.6	23.5						
50	10.5	11.3	11.9	12.0	11.6	12.2	11.8	10.9	10.8	11.0	10.8	10.6						
55	4.37	4.75	4.75	4.87	4.65	5.00	4.80	4.80	4.56	4.64	4.45	4.44						
60	1.38	1.41	1.43	1.45	1.45	1.47	1.42	1.40	1.38	1.36	1.34	1.33						
65	0.81	0.82	0.84	0.85	0.86	0.87	0.84	0.82	0.82	0.79	0.78	0.78						
70	0.40	0.40	0.40	0.42	0.42	0.43	0.42	0.41	0.40	0.40	0.38	0.38						
75	0.12	0.12	0.11	0.12	0.12	0.13	0.13	0.13	0.13	0.13	0.12	0.12						
80	0.06	0.05	0.05	0.05	0.05	0.05	0.06	0.05	0.05	0.06	0.05	0.04						
85	0.03	0.02	0.02	0.03	0.02	0.02	0.03	0.02	0.02	0.03	0.02	0.02						
90	0.00	0.00	0.00	0.00	0.00	0.00	0.00	0.00	0.00	0.00	0.00	0.00						
95	0.00	0.00	0.00	0.00	0.00	0.00	0.00	0.00	0.00	0.00	0.00	0.00						
100	0.00	0.00	0.00	0.00	0.00	0.00	0.00	0.00	0.00	0.00	0.00	0.00						
105	0.00	0.00	0.00	0.00	0.00	0.00	0.00	0.00	0.00	0.00	0.00	0.00						
110	0.00	0.00	0.00	0.00	0.00	0.00	0.00	0.00	0.00	0.00	0.00	0.00						
115	0.00	0.00	0.00	0.00	0.00	0.00	0.00	0.00	0.00	0.00	0.00	0.00						
120	0.00	0.00	0.00	0.00	0.00	0.00	0.00	0.00	0.00	0.00	0.00	0.00						
125	0.00	0.00	0.00	0.00	0.00	0.00	0.00	0.00	0.00	0.00	0.00	0.00						
130	0.00	0.00	0.00	0.00	0.00	0.00	0.00	0.00	0.00	0.00	0.00	0.00						
135	0.00	0.00	0.00	0.00	0.00	0.00	0.00	0.00	0.00	0.00	0.00	0.00						
140	0.00	0.00	0.00	0.00	0.00	0.00	0.00	0.00	0.00	0.00	0.00	0.00						
145	0.00	0.00	0.00	0.00	0.00	0.00	0.00	0.00	0.00	0.00	0.00	0.00						
150	0.00	0.00	0.00	0.00	0.00	0.00	0.00	0.00	0.00	0.00	0.00	0.00						
155	0.00	0.00	0.00	0.00	0.00	0.00	0.00	0.00	0.00	0.00	0.00	0.00						
160	0.00	0.00	0.00	0.00	0.00	0.00	0.00	0.00	0.00	0.00	0.00	0.00						
165	0.00	0.00	0.00	0.00	0.00	0.00	0.00	0.00	0.00	0.00	0.00	0.00						
170	0.00	0.00	0.00	0.00	0.00	0.00	0.00	0.00	0.00	0.00	0.00	0.00						
175	0.00	0.00	0.00	0.00	0.00	0.00	0.00	0.00	0.00	0.00	0.00	0.00						
180	0.00	0.00	0.00	0.00	0.00	0.00	0.00	0.00	0.00	0.00	0.00	0.00						

C Range: 0 - 360DEG
C Interval: 30.0DEG
Test Speed: HIGH
Temperature:25.3℃
Operators:zoe
Test Date:2024-5-21

γ Range: 0 - 180DEG
γ Interval: 1.0DEG
Test System:EVERFINE GO-SPEX500_V1 SYSTEM V2.00.461
Humidity:65.0%
Test Distance:3.160m [K=1.0000]
Remarks: LAMP:BXRE-30G10TH-A-83 Ra:90
LENS:PM-1082B-WH 36R
NO DRIVER:300mA
30minutes warm-up